

Helicopter Tip Sheet

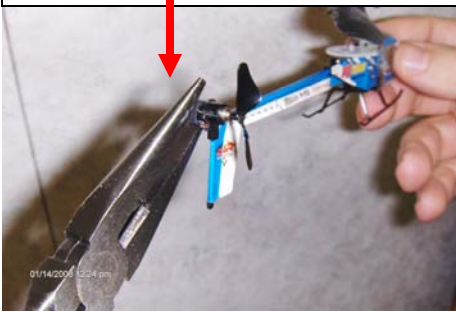
Tail Rotor Replacement



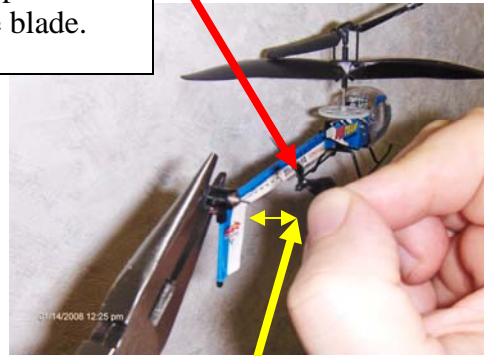
This is the rear blade called the Tail Rotor



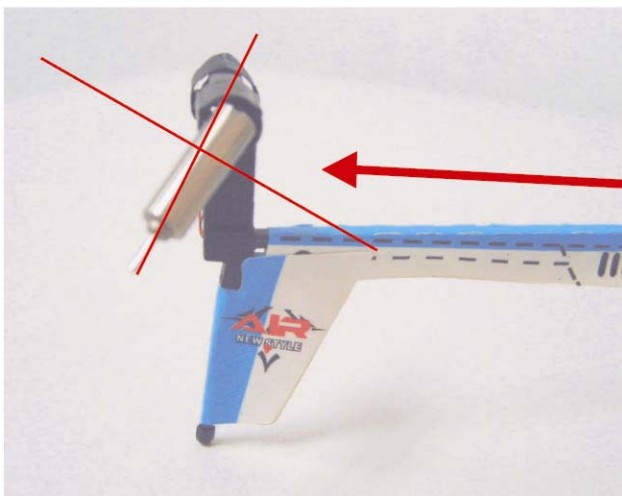
Use a pair of narrow pliers and hold the larger black engine casing on the other side of the helicopter from the blade. Do not squeeze too hard.



Carefully remove only the blade from the pin that holds the blade.



Attach the new replacement tail rotor blade into the pin.



Warning! The inside motor mechanism should never start to come out of the engine housing, as shown here! If this happens, the wires attached to the engine will detach, making the helicopter non functional.

Ensure the engine stays inside while removing the blade to avoid permanent damage to the helicopter.